

## HOW TO LOG IN

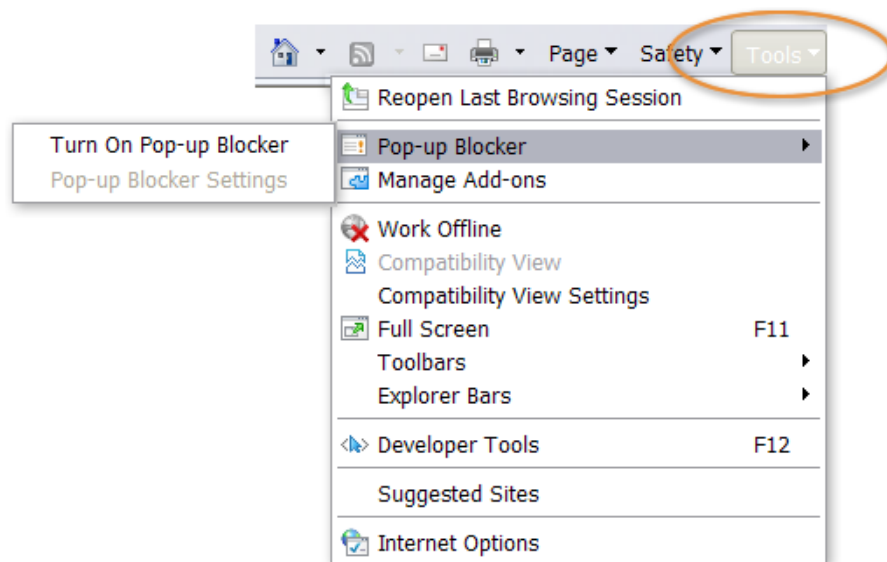
Students can register for the courses by following these steps:

1. Go to [www.Delphiintheclassroom.com](http://www.Delphiintheclassroom.com).
2. In the top-right corner, click the Log In link to open the Login page.
3. Click the New Account link and complete the registration form.

You will be sent an e-mail confirmation to your university e-mail account. They can then click the link in the confirmation e-mail to purchase an eLearning course using PayPal™ or a credit card. The average course price is \$25.00. The course is available for 180 days.

## TROUBLE SHOOTING TIPS

- Verify that you are using Internet Explorer 6.0 or higher.
- In Internet Explorer, turn off your pop-up blockers.



- Note:** The Google Taskbar is known to cause problems with viewing the training. If you have verified the above two items and are still having problems, turn off the Google Taskbar.